

Useful Information

If you have any queries or require any further information about your child's appointment please contact:

**The Child Development Centre
Sandy Lane
Orford
Warrington
WA2 9HY**

Tel: 01925 867867

Please ask for the Community Paediatric Audiology Department.

Local Pharmacy - Your local pharmacies offer a wide range of services including information and general advice on symptom relief medicines as well as a prescription collection and delivery service.

Call our Bridgewater Patient Services line on **0800 587 0562** for comments, compliments, complaints and to receive impartial and confidential advice or information about our services. You can also contact us if you would like this document in another language or format. Email: patient.services@bridgewater.nhs.uk.

 www.twitter.com/bridgewater_nhs

 www.facebook.com/bridgewaternhs

Visit our website at: www.bridgewater.nhs.uk

© Version No: BRIDGE0008

Bridgewater Community Healthcare



NHS Trust

COMMUNITY PAEDIATRIC AUDIOLOGY

Glue Ear Leaflet – Information for Parents



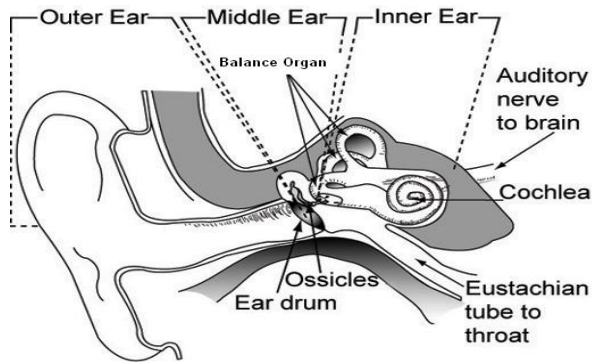
Bridgewater
Healthcare at the heart
of your community

What is Glue Ear?

- Glue ear is a condition which affects many young children and is more common in the winter months.
- It is fluid that builds up behind the ear drum in a space called the middle ear which is usually filled with air.
- It can affect one or both ears at any one time.
- It usually improves by itself but in some cases can persist and may cause a hearing loss. It is really important to have a hearing test to check how glue ear is affecting your child's hearing.

Why does Glue Ear occur?

- Following coughs, colds or ear infections the tube which connects the middle ear to the back of the throat (Eustachian tube) may become blocked with mucus causing fluid to build up in the middle ear space. This may affect your child's hearing.



How to help your child hear more clearly.

- Attract your child's attention before speaking to him/her.
- Speak clearly and don't shout.
- Let your child see your face when you are speaking to him/her.
- Keep background noise to a minimum.
- Inform school, nursery or anyone who looks after your child to do the same.

What happens after the hearing test?

- Your child will be reviewed in three months for a repeat hearing test. This is national guidance called watchful waiting.
- If your child only has a mild hearing loss with no other problems then his/her hearing will continue to be monitored.
- Children with persistent glue ear causing hearing loss may be referred to an Ear, Nose and Throat (ENT) Consultant.
- If you have an ENT appointment a decision to insert grommets may be made. Grommets are small ventilation tubes that are inserted into the eardrum under general anaesthetic. They help your child to hear better.
- Temporary fitting of hearing aids may also be considered.